

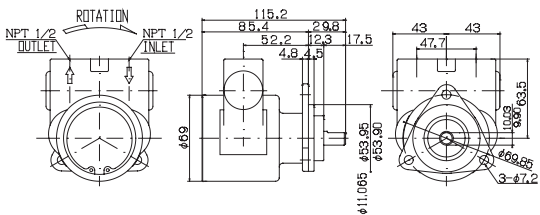
## Standard specification

Main unit	stainless steel
Discharge rate	6.4L/min~15.5L/min
Discharge pressure (Max)	1.4MPa
Direction of rotation (When viewed from the nameplate)	Right
Mass	2.0kg
Standard number of rotations (r/min)	1450/50Hz 1725/60Hz

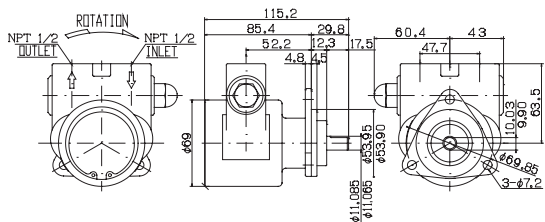


## Dimensional diagrams (mm)

### ■ Without relief valve



### ■ With relief valve



## Performance Table

2600 series Performance table									
The amount of power required for standard discharge in 1450r/min (50Hz).									
Format	Discharge rate(L/min)				Required power(W)				
	Pressure (MPa)				Pressure (MPa)				
	0.35	0.7	1.05	1.4	0.35	0.7	1.05	1.4	
2607	13.0	12.9	12.7	12.5	137	233	352	455	
2606	11.9	11.7	11.5	11.4	131	232	333	437	
2605	10.4	10.2	10.1	10.0	122	213	308	404	
2604	9.2	9.0	8.8	8.7	117	201	287	376	
2603	7.6	7.5	7.4	7.2	106	185	265	338	
2602	6.4	6.1	6.1	6.0	100	168	244	320	

2600 series Performance table									
The amount of power required for standard discharge in 1725r/min (60Hz).									
Format	Discharge rate(L/min)				Required power(W)				
	Pressure (MPa)				Pressure (MPa)				
	0.35	0.7	1.05	1.4	0.35	0.7	1.05	1.4	
2607	15.5	15.3	15.1	14.9	159	281	411	534	
2606	14.1	13.9	13.7	13.6	154	270	385	507	
2605	12.4	12.1	12.0	11.9	138	251	360	476	
2604	10.9	10.7	10.5	10.4	131	230	334	448	
2603	9.1	8.9	8.8	8.6	121	211	310	402	
2602	7.6	7.3	7.2	7.1	115	190	269	356	