

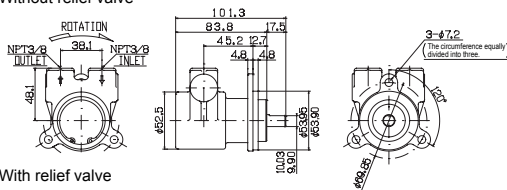
Standard specification

Main unit	Stainless steel
Discharge rate	0.95L/min~6.3L/min
Discharge pressure (Max)	1.4MPa
Direction of rotation (When viewed from the nameplate)	Right
Mass	1.25kg
Standard number of rotations	1450/50Hz 1725/60Hz

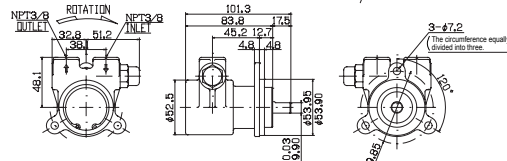


Dimensional diagrams (mm)

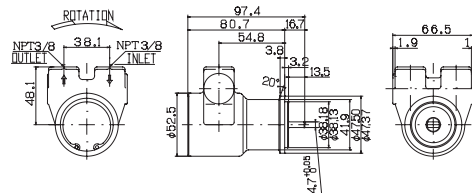
■ Without relief valve



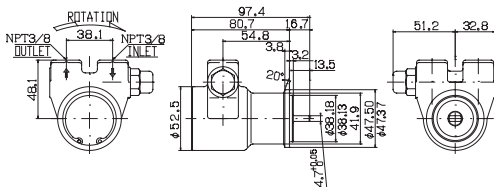
■ With relief valve



■ With flange, Without relief valve



■ With flange, With relief valve



Performance Table

1600 series Performance table								
The amount of power required for standard discharge in 1450r/min (50Hz).								
Format	Discharge rate(L/min)				Required power(W)			
	Pressure (MPa)		Pressure (MPa)		Pressure (MPa)		Pressure (MPa)	
	0.35	0.7	1.05	1.4	0.35	0.7	1.05	1.4
1604	5.14	5.09	5.04	4.98	79	122	176	215
1607	4.24	4.19	4.14	4.08	73	119	159	208
1608	3.77	3.71	3.63	3.55	67	112	152	199
1609	3.29	3.18	3.10	3.02	69	106	146	187
1610	2.71	2.65	2.57	2.49	59	98	138	180
1605	1.96	1.91	1.80	1.70	53	95	127	171
1622	1.33	1.33	1.24	1.17	40	84	118	157
1621	0.80	0.74	0.69	0.64	26	62	98	137

1600 series Performance table								
The amount of power required for standard discharge in 1725r/min (60Hz).								
Format	Discharge rate(L/min)				Required power(W)			
	Pressure (MPa)		Pressure (MPa)		Pressure (MPa)		Pressure (MPa)	
	0.35	0.7	1.05	1.4	0.35	0.7	1.05	1.4
1604	6.11	6.05	5.99	5.93	92	144	203	257
1607	5.04	4.98	4.92	4.85	81	133	187	242
1608	4.48	4.41	4.32	4.22	82	127	182	227
1609	3.91	3.78	3.69	3.59	75	120	174	221
1610	3.22	3.15	3.06	2.96	67	112	159	206
1605	2.33	2.27	2.14	2.02	60	108	146	186
1622	1.58	1.58	1.48	1.39	49	91	130	174
1621	0.95	0.88	0.82	0.76	40	70	112	156