

## Feature

The 3FA pump is for large capacity and mid. Pressure. The max. flow rates and discharge pressures are 93.6 L/min or less and 2.5 MPa or less, respectively. The pump is used for hydraulic and lubrication applications. The dedicated motor is often used with the 3FA pump. Since this pump is relatively small, there are many cases that the pump is integrated into a machine. The rotation direction is clockwise, which is opposite to that of 1A, 1HG and 2A.



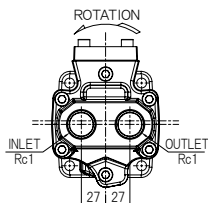
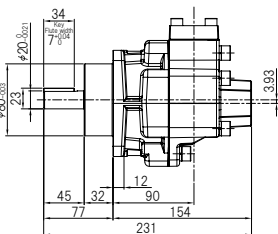
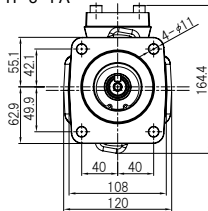
## Model

| FTP- | Model No. | Form                             | Seal material                        | Relief valve      | Relief valve set pressure                |
|------|-----------|----------------------------------|--------------------------------------|-------------------|--|
|      | FA        |                                  |                                      |                   |  |
|      | 320       | No mark: Standard                | No mark: Standard                    | No mark: No valve | ex.                                      |
|      | 330       | M: Dedicated motor (short shaft) | (-5~80°C)                            | VB: With valve    | 0.1 : Set Pressure 0.1MPa (Spring No.1L) |
|      | 340       |                                  | VF: Viton (R) for high temp. (120°C) | (Internal-return) | 0.5 : Set Pressure 0.5MPa (Spring No.2L) |
|      |           |                                  |                                      |                   | 1.0 : Set Pressure 1.0MPa (Spring No.3L) |
|      |           |                                  |                                      |                   | 2.0 : Set Pressure 2.0MPa (Spring No.4L) |

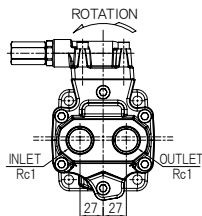
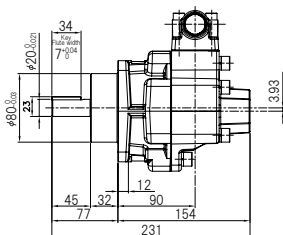
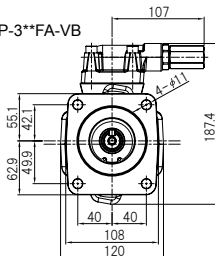
Model examples: FTP-320FAM-VB1.0 (With relief valve (set pressure 1.0MPa), exclusive motor)

## Dimensional diagrams (mm)

■ FTP-3\*\*FA



■ FTP-3\*\*FA-VB



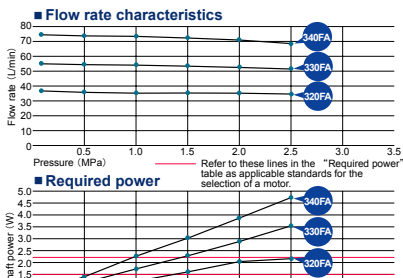
## Spec

| Model      | Spec | Flow rate per rev. (ml/rev) | Theoretical flow rate (L/min) |                       | Max. discharge pressure (MPa) | Max. revolution (min <sup>-1</sup> ) | Approx. weight (kg) |
|------------|------|-----------------------------|-------------------------------|-----------------------|-------------------------------|--------------------------------------|---------------------|
|            |      |                             | 1500min <sup>-1</sup>         | 1800min <sup>-1</sup> |                               |                                      |                     |
| 320FA (VB) |      | 26                          | 39.0                          | 46.8                  | 2.5                           | 1800                                 | 10.5                |
| 330FA (VB) |      | 39                          | 58.5                          | 70.2                  | 2.5                           | 1800                                 | 10.5                |
| 340FA (VB) |      | 52                          | 78.0                          | 93.6                  | 2.0                           | 1800                                 | 10.5                |

## Performance

● Test conditions Oil: ISO-VG46 Oil temp.: 40°C

### At 1,450 rotations (50Hz)



### At 1,750 rotations (60Hz)

