

Feature

The compact 2MY is the combination of the 2A pump and a dedicated motor. The standard spec. of the motor is 3 phase and 200V.

There is the ultra high temperature version (VH, max. temp. 150°C) in addition to the VF version.



Model

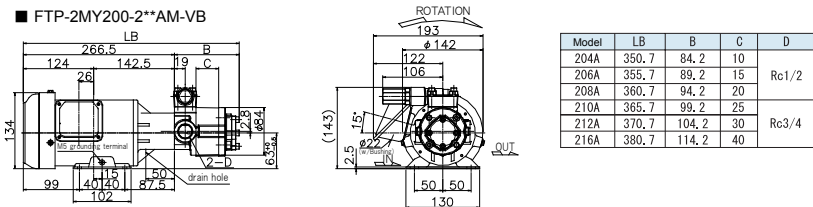
<b>FTP-2MY</b>	<b>Motor output</b>	<b>Model No.</b>	<b>Applications</b>	<b>Rotation direction</b>	<b>Seal material</b>	<b>Relief valve</b>	<b>Relief valve set pressure</b>
	200 400 750 1500	204 206 208 210 212 216 220	A M No mark: Standard WO: Bunker oil, Coolant Water PL: Liquid seal	No mark: Counter clockwise R: Clockwise	No mark: Standard (-5~80°C) VF: Viton(R) for high temp. (120°C) VH: Ultrahigh temp. (150°C)	No mark: No valve VB: With valve (Internal-return) VD: With valve (External-return)	ex. 0.1: Set pressure 0.1MPa (Spring No.1L) 0.5: Set pressure 0.5MPa (Spring No.2L) 1.0: Set pressure 1.0MPa (Spring No.3L) 2.0: Set pressure 2.0MPa (Spring No.4L)

Model examples:  
 FTP-2MY200-204AM-VB1.0 (200W,3 phase,with relief valve (set pressure 1.0MPa))  
 FTP-2MY400-210AMR (400W,3 phase,counter-clockwise as seen from the pump side)  
 FTP-2MY750-216AM-VD (750W,3 phase,with relief valve (external-return))

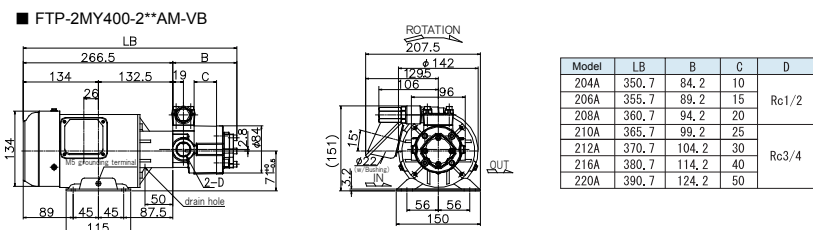
※ On the following pages, there are descriptions of motors with different voltages, insulation classes of B or higher and outdoor use.

Dimensional diagrams (mm)

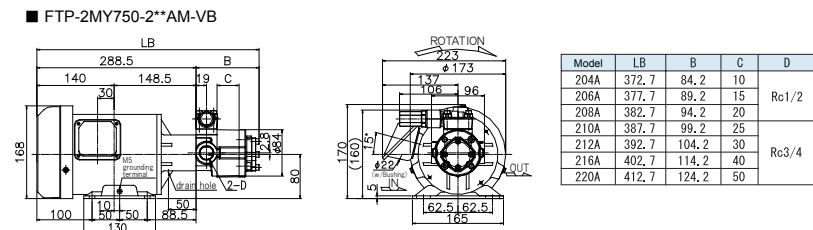
■ FTP-2MY200-2\*\*AM-VB



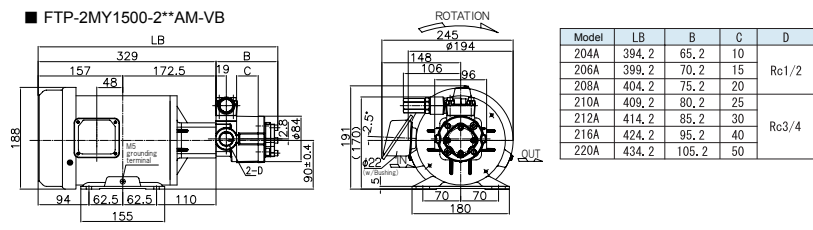
■ FTP-2MY400-2\*\*AM-VB



■ FTP-2MY750-2\*\*AM-VB



■ FTP-2MY1500-2\*\*AM-VB



※ 380V/50Hz, 400V/50・60Hz and 440V/60Hz are semi-standard.

Spec

Model	No. of motor revolutions 50Hz 1500min <sup>-1</sup>					No. of motor revolutions 60Hz 1800min <sup>-1</sup>				
	Theoretical flow rate (L/min)	Max. discharge pressure to motor output (MPa)				Theoretical flow rate (L/min)	Max. discharge pressure to motor output (MPa)			
		200W	400W	750W	1500W		200W	400W	750W	1500W
204A (VB,VD)	6.0	1.2	3.0	3.0	3.0	7.2	0.9	2.3	3.0	3.0
206A (VB,VD)	9.0	0.7	1.8	2.5	2.5	10.8	0.5	1.5	2.5	2.5
208A (VB,VD)	12.0	0.5	1.3	2.5	2.5	14.4	0.3	1.0	2.3	2.5
210A (VB,VD)	15.0	0.4	1.1	2.5	2.5	18.0	0.3	0.9	2.0	2.5
212A (VB,VD)	18.0	0.3	0.9	2.0	2.0	21.6	0.2	0.7	1.6	2.0
216A (VB,VD)	24.0	0.2	0.7	1.5	1.5	28.8	0.1	0.5	1.2	1.5
220A (VB,VD)	30.0	—	0.5	1.2	1.2	36.0	—	0.3	0.9	1.2

The above max. discharge pressures are in combination with ISO-VG46 at 40°C. The max. pressures may be lower depending on viscosity and temperature. Note that for liquids with a higher viscosity than IEO-VG46 at 40 °C, the motor power may be insufficient. Lower viscosity liquids limit the pumps maximum discharge pressure. For handling higher viscosity (>46 mm<sup>2</sup>/s), The motor capacity has to be increased by 1 or 2 levels. For use of lower viscosity (<10 mm<sup>2</sup>/s), please refer to the spec. of 2MY-2AWO M.

Motor spec

Power (W)	Pole (P)	Rating	Voltage (V)	Frequency (Hz)	Revolutions (min <sup>-1</sup> )	Current (A)	Approx. weight (kg)
200	4	Continuous	200/200/220	50/60/60	1425/1685/1710	1.23/1.15/1.14	10.0
400	4	Continuous	200/200/220	50/60/60	1425/1710/1725	2.4/2.1/2.1	9.7
750	4	Continuous	200/200/220	50/60/60	1425/1690/1715	3.65/3.52/3.4	13.0
1500	4	Continuous	200/200/220	50/60/60	1440/1705/1720	7.0/6.18/6.23	22.0

● Squirrel-cage induction motor ● Insulation class E ● Totally-enclosed and fan cooled type ● IP44