

## Feature

This 1MBC product combines 1HG pump and a motor are connected by a coupling and mounted on a base. Various motor specifications can be chosen. (e.g. outdoor use, explosion-proof, high efficiency)



## Model

FTP-1MBC 200 - 11 HGI - 12

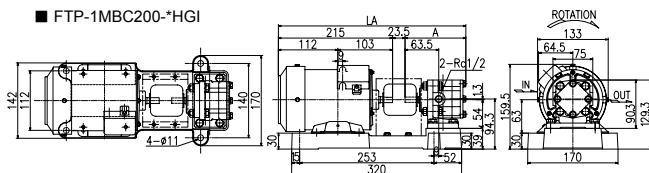
Motor output: 200, 400  
 Model No.: 11, 12  
 Seal material: No mark: Standard (-5~80°C)  
 VF: Viton (R) for high temp. (120°C)

Model examples: FTP-1MBC200-11HGI (200W)

※ Special versions are described in the following.

## Dimensional diagrams (mm)

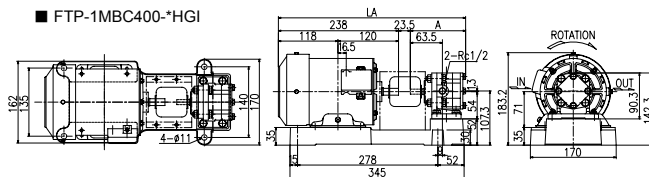
### ■ FTP-1MBC200-\*HGI



Model	LA	A
11HGI	350	111
12HGI	355	116

● The above are numbers in case that a Mitsubishi motor is used.

### ■ FTP-1MBC400-\*HGI



Model	LA	A
11HGI	373	111
12HGI	378	116

● The above are numbers in case that a Mitsubishi motor is used.

## Spec

Model	No. of motor revolutions 50Hz 1500min <sup>-1</sup>			No. of motor revolutions 60Hz 1800min <sup>-1</sup>		
	Theoretical discharge (L/min)	Max. discharge pressure to motor output (MPa)		Theoretical discharge (L/min)	Max. discharge pressure to motor output (MPa)	
		200W	400W		200W	400W
11HGI	2.2	2.5	2.5	2.7	2.5	2.5
12HGI	3.7	2.0	2.5	4.5	1.6	2.5

● The above max. discharge pressures are in use of ISO-VG46 at 40°C. The rates vary depending on viscosity and temperature.

## FTP-1MBC's compliance to standards

	U.S.A./Canada	Korea	Australia	E U	China
Required standard	1HP~200HP IE3	0.75kW~200kW IE2	0.73kW~185kW LEVEL 1A,1B	0.75kW~375kW IE2	0.55kW~315kW GB2
Complied product	Standard product	Standard product	Standard product	CE certified product	In preparation

● The above is as of June, 2012. Since standards may be revised, please check the latest status of a standard of your requirement.