

Feature

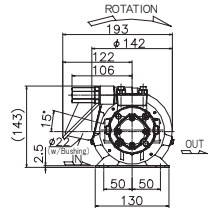
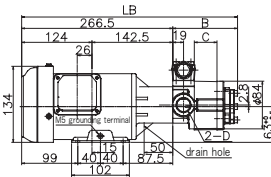
The 2MY-2AWOM consists of a dedicated motor and the 2AWO pump suitable for feeding coolant water and bunker oil such as waste oil. This unit has a small footprint. In case the ultra high temperature version (VH, max. 150°C) is required, please consult with Fuji Techno.

Model examples: FTP-2MY750-220AWOM-VB0.7 (750W, 3 phase, with relief valve (set pressure 0.7MPa))

Dimensional diagrams (mm)

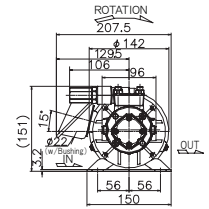
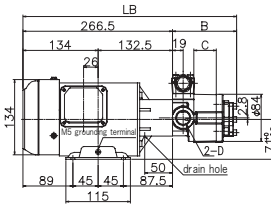
■ FTP-2MY200-2**AWOM-VB

形式	LB	B	C	D
204A	351.4	84.9	10.7	Rc1/2
206A	356.7	90.2	16.0	
208A	362.0	95.5	21.3	
210A	367.2	100.7	26.5	
212A	372.4	105.9	31.7	Rc3/4
216A	382.6	116.1	41.9	



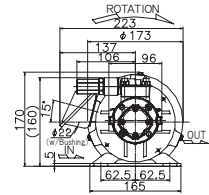
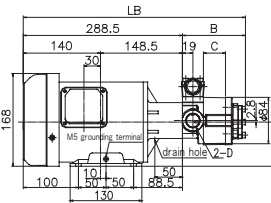
■ FTP-2MY400-2**AWOM-VB

形式	LB	B	C	D
204A	351.4	84.9	10.7	Rc1/2
206A	356.7	90.2	16.0	
208A	362.0	95.5	21.3	
210A	367.2	100.7	26.5	
212A	372.4	105.9	31.7	Rc3/4
216A	382.6	116.1	41.9	
220A	392.7	126.2	52.0	



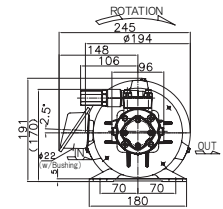
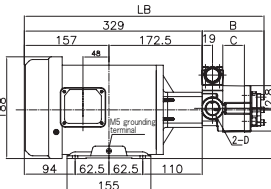
■ FTP-2MY750-2**AWOM-VB

形式	LB	B	C	D
204A	373.4	84.9	10.7	Rc1/2
206A	378.7	90.2	16.0	
208A	384.0	95.5	21.3	
210A	389.2	100.7	26.5	
212A	394.4	105.9	31.7	Rc3/4
216A	404.6	116.1	41.9	
220A	414.7	126.2	52.0	



■ FTP-2MY1500-2**AWOM-VB

形式	LB	B	C	D
204A	394.9	65.2	10.7	Rc1/2
206A	400.2	71.2	16.0	
208A	405.5	76.5	21.3	
210A	410.7	81.7	26.5	
212A	415.9	86.9	31.7	Rc3/4
216A	426.1	97.1	41.9	
220A	436.2	107.2	52.0	



※ 380V/50Hz, 400V/50・60Hz and 440V/60Hz are available.

Spec

Model	No. of motor revolutions 50Hz 1500min ⁻¹					No. of motor revolutions 60Hz 1800min ⁻¹				
	Theoretical flow rate (L/min)	Max. discharge pressure to motor output (MPa)				Theoretical flow rate (L/min)	Max. discharge pressure to motor output (MPa)			
		200W	400W	750W	1500W		200W	400W	750W	1500W
204A (VB,VD)	6.0	1.5	1.5	1.5	1.5	7.2	1.2	1.5	1.5	1.5
206A (VB,VD)	9.0	0.8	1.5	1.5	1.5	10.8	0.6	1.5	1.5	1.5
208A (VB,VD)	12.0	0.6	1.4	1.5	1.5	14.4	0.5	1.1	1.5	1.5
210A (VB,VD)	15.0	0.5	1.2	1.5	1.5	18.0	0.4	1.0	1.5	1.5
212A (VB,VD)	18.0	0.3	1.0	1.5	1.5	21.6	0.2	0.8	1.5	1.5
216A (VB,VD)	24.0	0.2	0.8	1.4	1.5	28.8	0.1	0.6	1.2	1.5
220A (VB,VD)	30.0	0.1	0.6	1.2	1.2	36.0	0.1	0.5	1.0	1.2

● The above max. discharge pressure are in use of ISO-VG2 at 40°C.

● In the event that abrasive liquid like kerosene oil is used, a discharge pressure must be 0.7MPa or less.